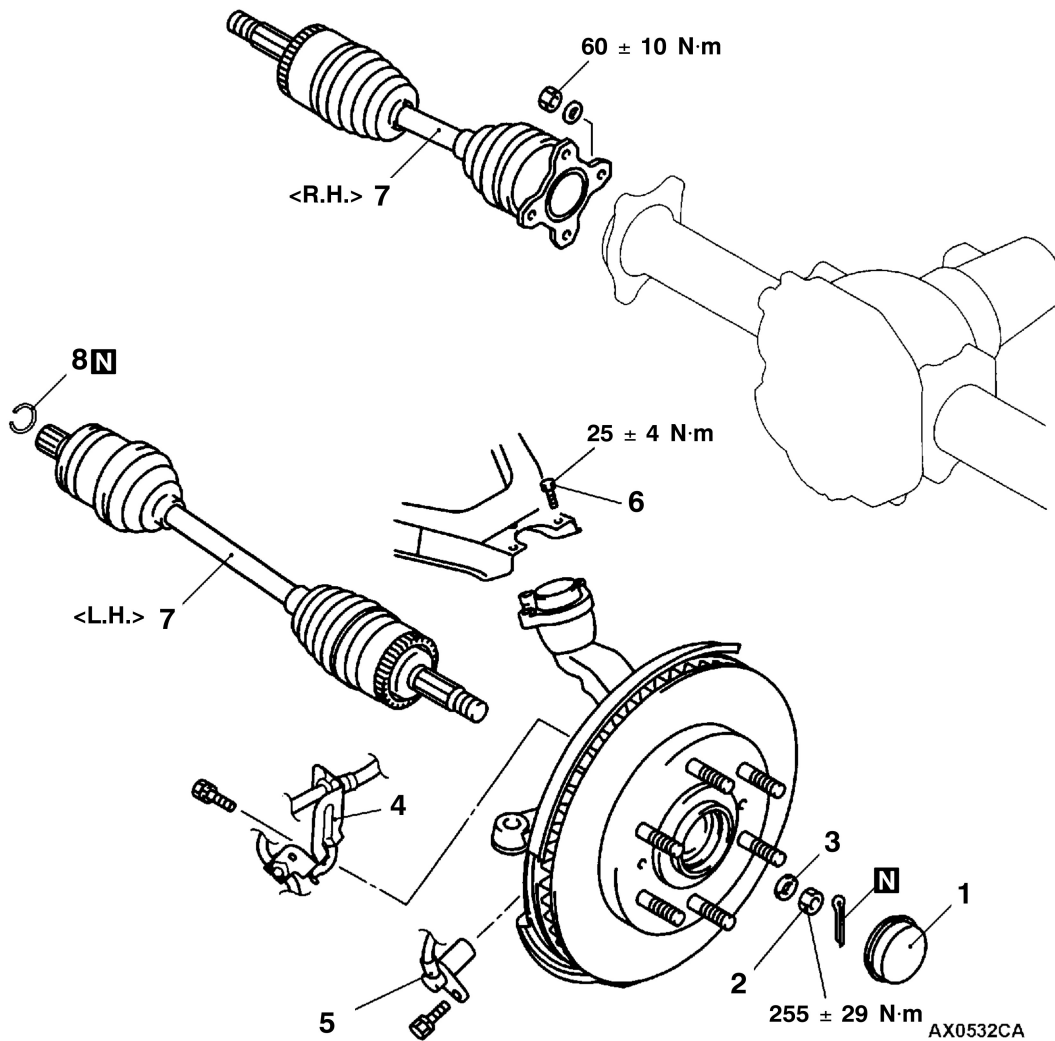
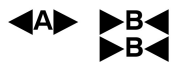


DRIVE SHAFT

REMOVAL AND INSTALLATION

Pre-removal and Post-installation Operations

- Removal and Installation of Under Cover and Skid Plate (Refer to GROUP 42.)
- Connection and Disconnection of Shock Absorber and Stabilizer Link in the Lower Arm Side (Refer to GROUP 33 - Lower Arm.)
- Removal and Installation of Front Brake Assembly (Refer to GROUP 35A.)
- Connection and Disconnection of Knuckle and Tie Rod End (Refer to GROUP 37 - Steering Gear Linkage.)

**Removal steps**

1. Hub cap
2. Castle nut
3. Washer
4. Brake hose and vehicle speed sensor clamp bracket
5. Wheel speed sensor <vehicles with ABS>



6. Upper arm and upper arm ball joint connection
7. Drive shaft
8. Circlip <L.H.>